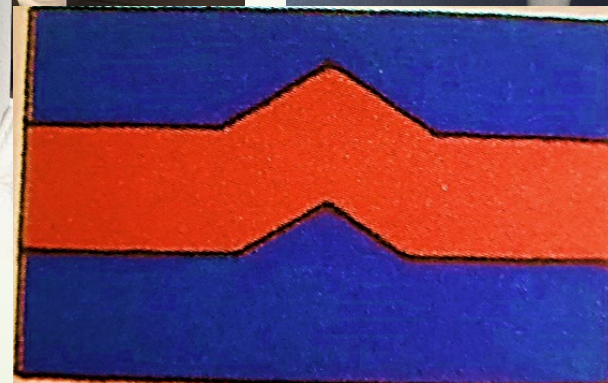
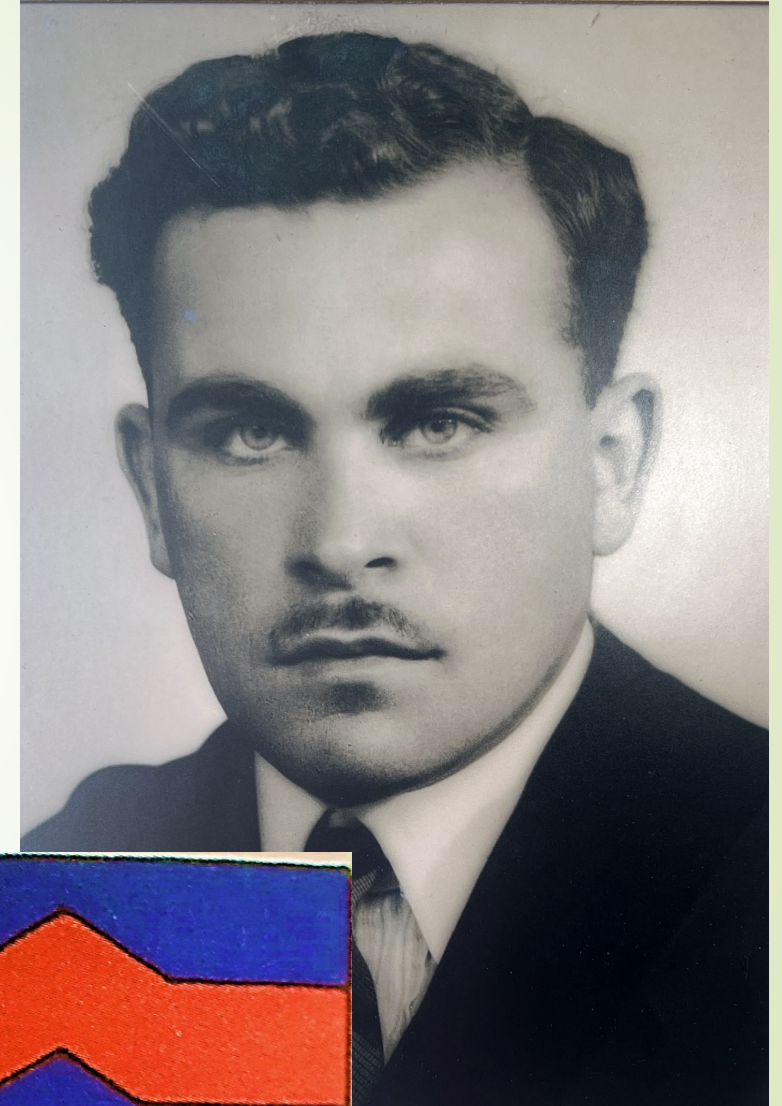
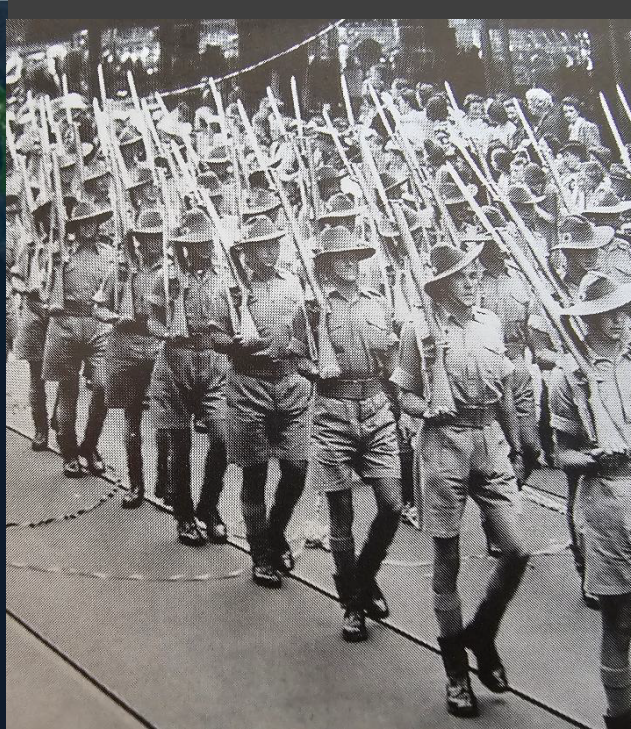


Statue and H.N. Silverman





arily composed of former Salvation Army musicians, the t

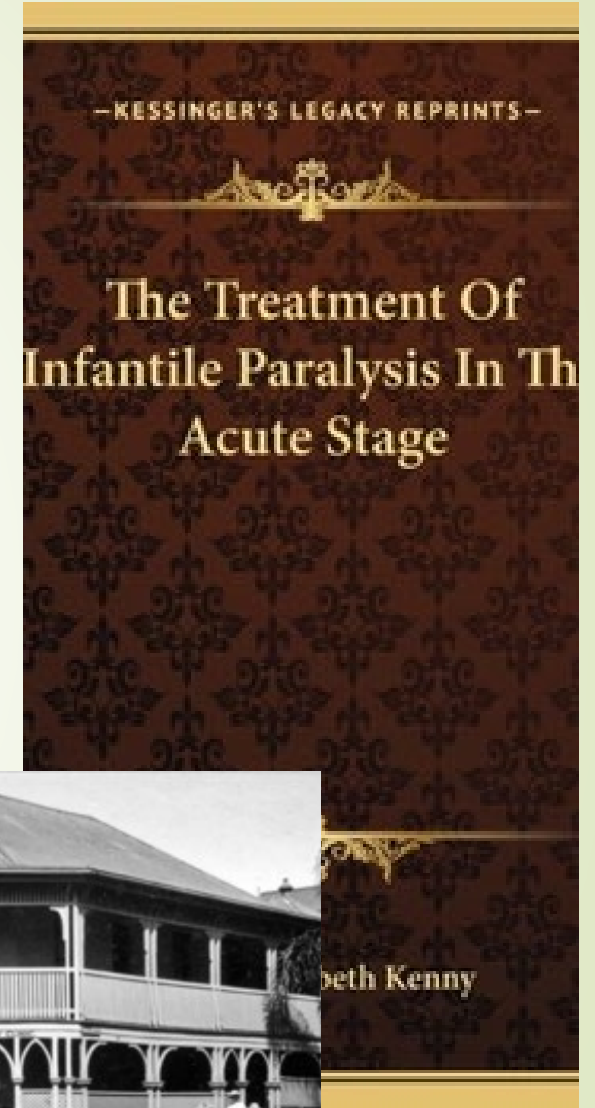


"Wirra" Formation 1942.



Lark Force,
lone battalion
New Britain Island
(14,100 sq miles)

Polio brings them together

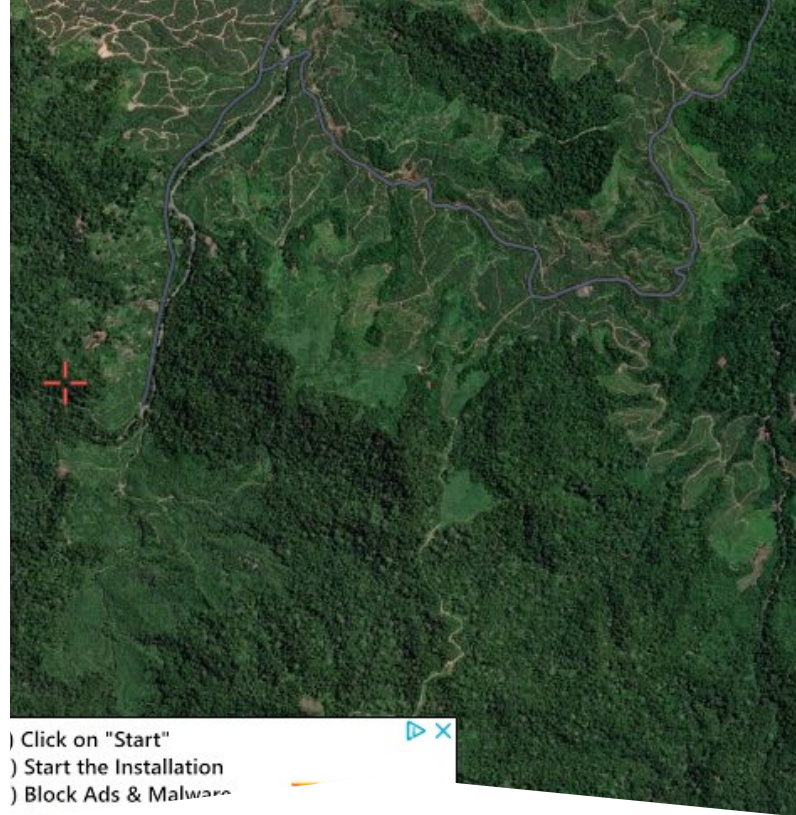




START

- 1) Click on "Start"
- 2) Start the Installation
- 3) Block Ads & Malware

Web Companion



) Click on "Start"

) Start the Installation

) Block Ads & Malware

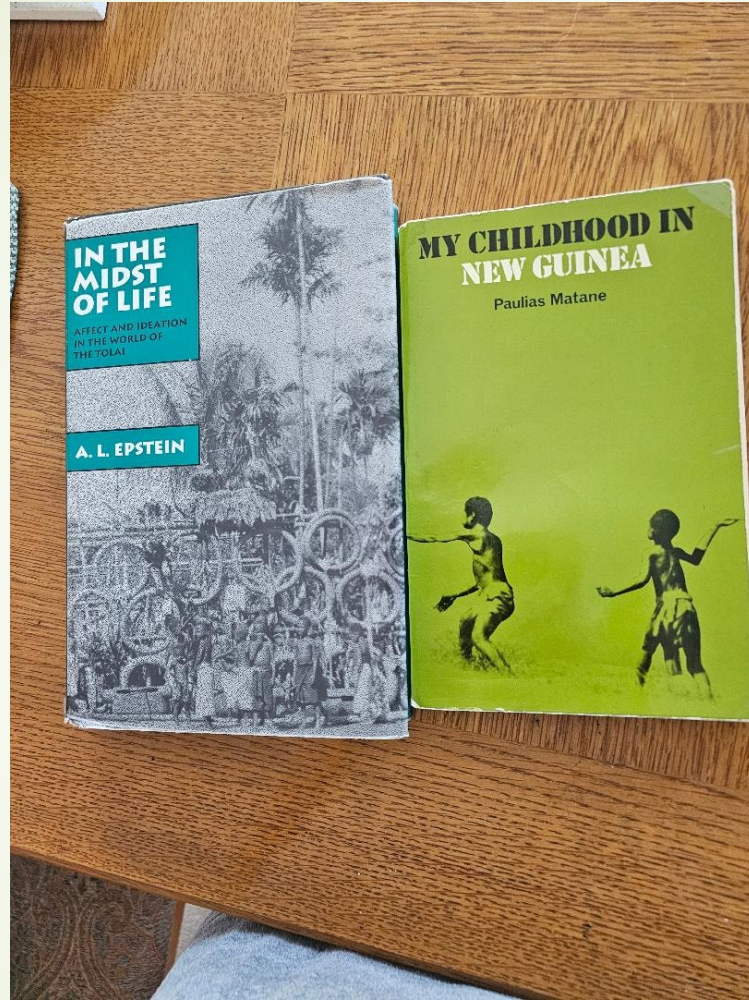


Forested area, cinchona trees, Ataliklikum Bay.
Mysteries and Magic



► The Bukubuk Tree grows and stands alone, unlike any other fruit tree. An adult tree stands over 20 meters tall, its branches stretching out like mango trees. The fruit is just amazingly sweet, with a starchy texture. Since Bukubuk trees can reach full height in five years, we often plant the seed, which is hard and shaped like a small brown rugby ball, to mark a place or event with spiritual significance. Tolai myth held that a Bukubuk tree could be inhabited by a Tambaran spirit because the bark is rough at the bottom. Putting the bark on boils and lumps could heal them heel naturally. Now, people sometimes plant the tree to mark the anniversary of the bringing of the Gospel of Jesus Christ to East New Britain Island.'

► Albert Konie, curator of the Rabaul Historical Society archives and initiate into the secret Tubuan Society.



Anjelique Giranah

Independent Consultant | Public Health, Community Development, Project Implementation and Management

Kavieng District, New Ireland, Papua New Guinea · [Contact info](#)

492 connections



Sensitivity Reader - Novel Manuscript

Loretta Goldberg · Contract

Sep 2023 - Jan 2024 · 5 mos

Remote

Read and provide editorial feedback on cultural norms and values mentioned in a manuscript. Review content to check for insensitive, offensive or stereotypical portrayal of characters.